

State of Wyoming Corner Record

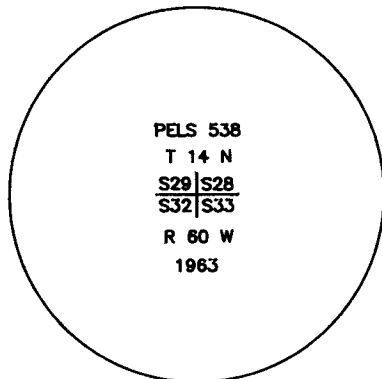
(In compliance with the CORNER PERPETUATION AND FILING ACT, Wyoming Statutes, 1977, Section 36-11-101, et. seq., and the Rules and Regulations of the Board of Registration for Professional Engineers and Professional Land Surveyors.)

Reverse side of this form may be used if more space is needed.

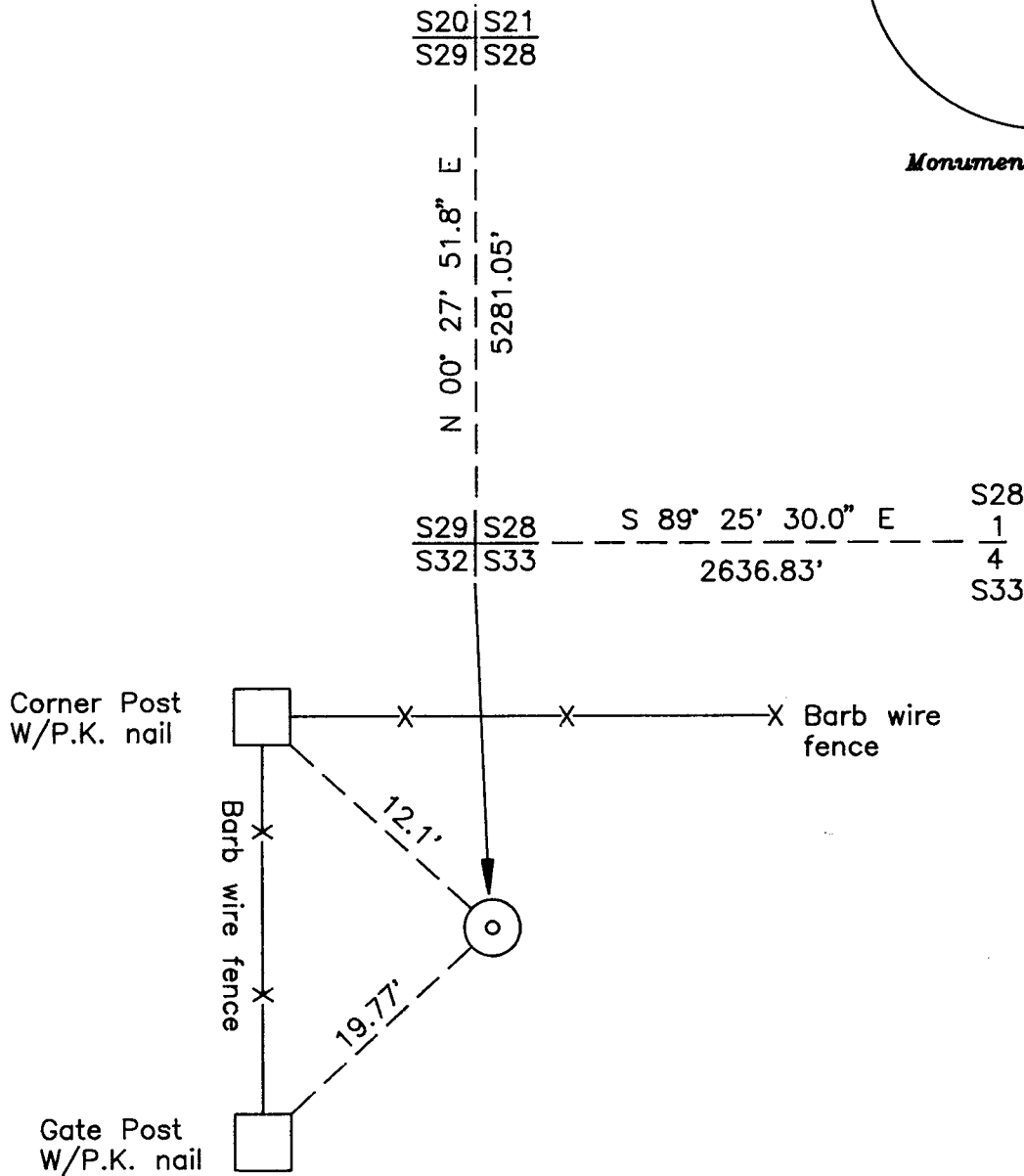
Record of original survey and citation of source of historical information (if corner is lost or obliterated). Description of corner monumentation evidence found and/or monument and accessories established to perpetuate the location of this corner. Sketch of relative location of monument, accessories, and reference points with course and distance to adjacent corner(s) (if determined in this survey). Method and rationale for reestablishment of lost or obliterated corner.

No corner evidence found for original corner to section(s) 28,29,32,33 called out in original G.L.O notes as a set limestone 22x10x8.

Found 6" dia conc monument w/2"
Brass cap marked as noted on right.



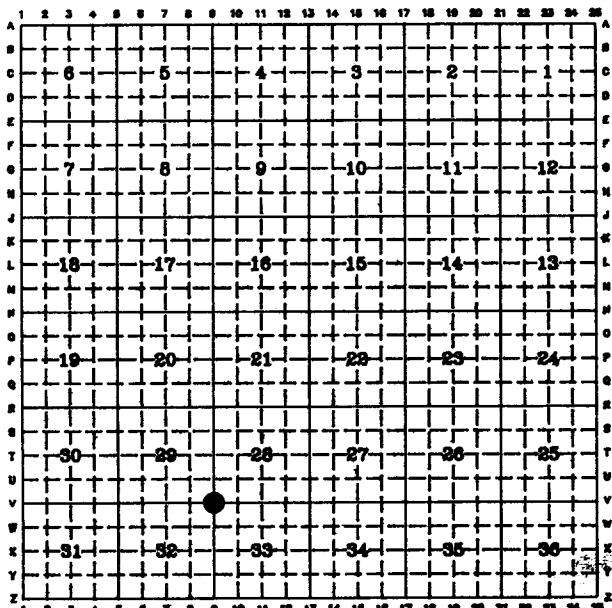
Monument Inscription



LACARNE COUNTY CLERK
 CHEYENNE, WY.
 '98 MAR 20 AM 9 49
 220866

Date of Field Work: 09/10/97 Office Reference: Field book No. 43

CROSS INDEX DIAGRAM



Firm/Agency, Address

ARMSTRONG
 Armstrong Engineering Services
 916 E. Carlson
 Cheyenne, Wyoming 82006
 (307) 632-2569

This corner record was prepared by me or under my direction and supervision.

SEAL & SIGNATURE

For Wm Armstrong



BOOK 1475

1613